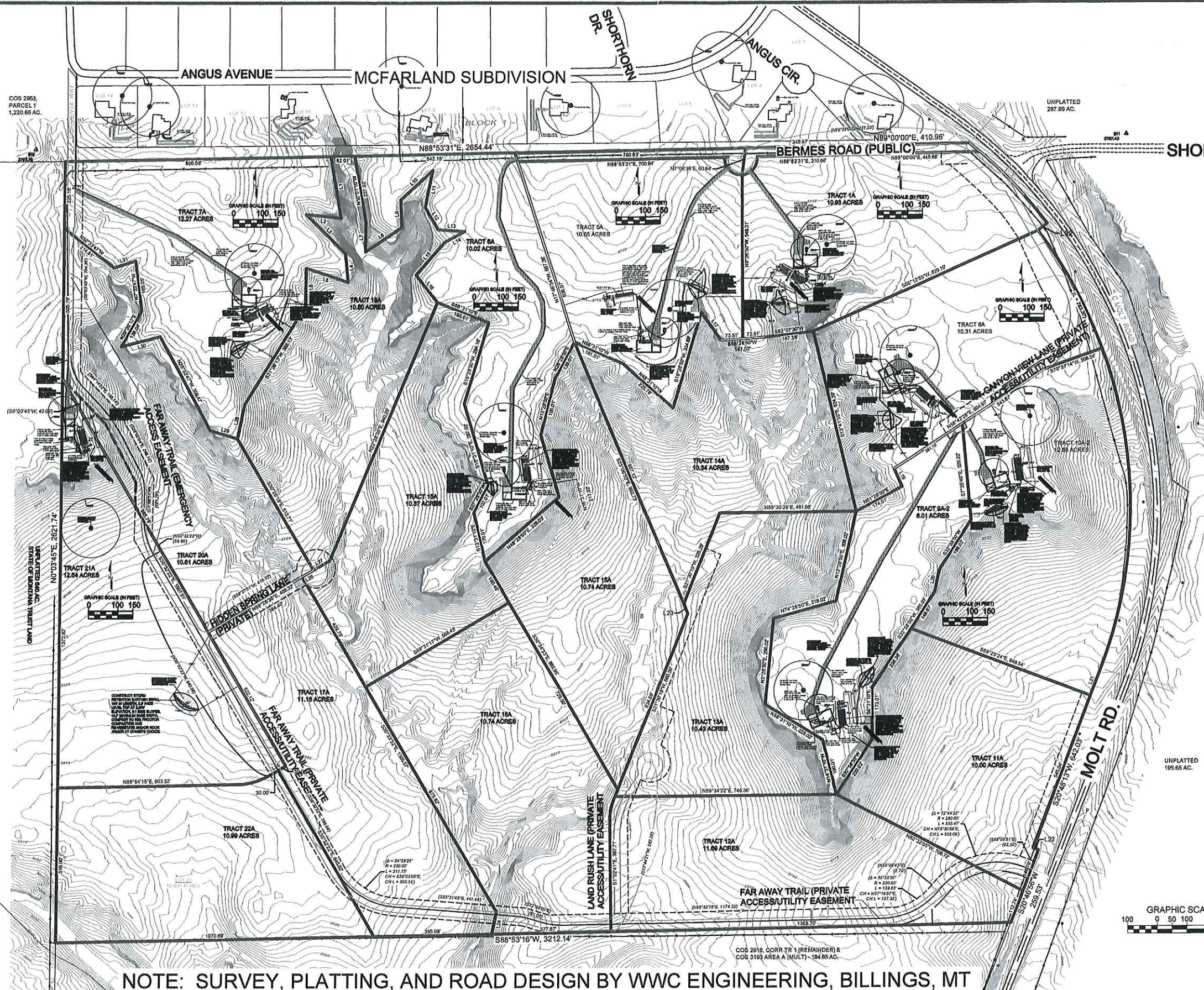


EQ20-1581

RECEIVED

FEB 05 2020

MT DEQ PUBLIC WATER & SUBDIVISIONS

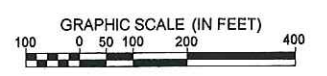


LINE NO.	LENGTH	BEARING
L1	210.07	S10°03'47"E
L2	119.04	N84°07'47"W
L3	168.09	S45°33'47"E
L4	99.03	S09°33'47"E
L5	150.02	N71°33'47"W
L6	137.04	S20°28'13"W
L7	98.01	N00°28'00"E
L8	148.01	N58°28'00"E
L9	93.01	N02°31'10"W
L10	149.01	N47°28'00"E
L11	128.01	S11°28'50"W
L12	87.01	S30°31'10"E
L13	89.01	S85°31'10"E
L14	75.01	S81°28'50"W
L15	146.01	S41°28'50"W
L16	118.01	S38°31'10"E

LINE NO.	LENGTH	BEARING
L17	114.01	N38°31'10"W
L18	65.00	N23°31'10"W
L19	75.01	S11°28'50"W
L20	98.99	N00°48'13"E
L21	20.00	S69°11'47"E
L22	35.87	S23°08'56"E
L23	78.60	S11°28'28"W
L24	60.00	N59°27'38"E
L25	44.92	N58°28'35"E
L26	52.34	N00°19'31"E
L27	117.94	S11°28'13"W
L28	97.00	N73°33'47"W
L29	138.04	S75°28'13"W
L30	76.00	S72°28'13"W
L31	39.78	S52°55'19"W

CURVE NO.	RADIUS	LENGTH	DELTA	CHORD BEARING	CHORD LENGTH
C101	1577.10	377.91	13°43'46"	S44°09'08"E	377.01
C102	1537.10	454.29	18°55'58"	N28°40'49"W	452.60
C103	1537.10	1100.21	41°00'38"	N00°11'27"E	1078.68
C104	200.00	78.71	23°33'00"	S10°13'49"W	78.21
C105	228.98	118.60	29°33'00"	N74°57'45"E	117.29
C106	1537.10	1554.45	57°58'34"	S08°19'31"E	1489.09
C107	55.00	88.48	92°10'38"	N39°48'40"E	79.25
C108	55.00	84.54	98°16'39"	S45°02'29"E	83.20
C109	1577.10	254.47	9°14'41"	N48°24'30"W	254.20

**APPROVED**  
 Montana Department of  
 Environmental Quality  
 M. Waite  
 Reviewer  
 2/6/2020  
 Date

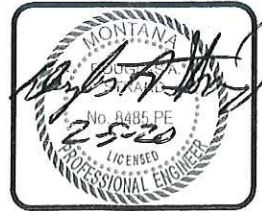


NOTE: SURVEY, PLATTING, AND ROAD DESIGN BY WWC ENGINEERING, BILLINGS, MT

DESIGN	DAS
DRAWN	DAS
CHECKED	DAS
APPROVED	DAS

NO.	DATE	REVISION	BY	APP

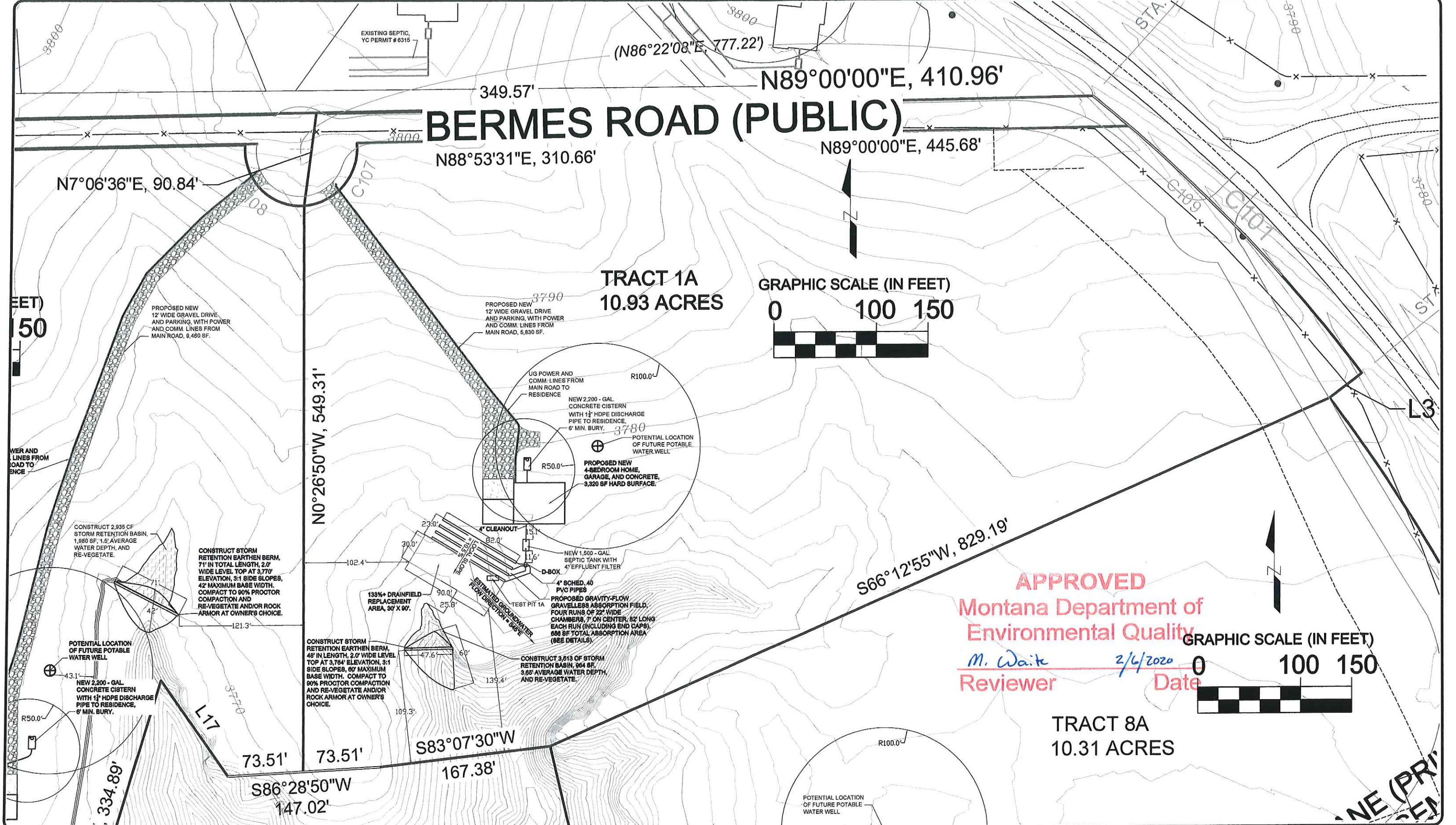
**FAR AND AWAY ESTATES  
 SUBDIVISION PHASE 1 AND  
 ADJACENT PROPERTIES**



**TREASURE STATE  
 ENGINEERING**  
 6308 GOLDEN WEST TERRACE, BILLINGS, MT 59106  
 PH. (406) 655-9397, EMAIL: dstrand25@msn.com  
 A Professional Limited Liability Corporation

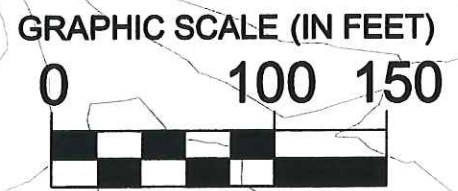
FAR AND AWAY ESTATES SUBDIVISION, PHASE 1,  
 RESIDENTIAL SITE EVALUATION AND DESIGN  
 PACKAGE, COS NO. 781 3RD AMENDED, IN  
 S15, T01N, R24E. TRACTS 1A, 5A, 6A, 7A, 8A, 9A-2,  
 10A-2, AND 21A ONLY.  
 YELLOWSTONE COUNTY, MONTANA

DATE 2/3/20  
 TSE NO 1922S  
**2**  
 SHEET  
 2 OF 15

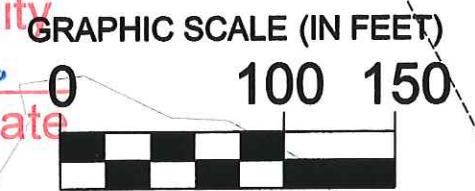


# BERMES ROAD (PUBLIC)

**TRACT 1A**  
10.93 ACRES



**APPROVED**  
Montana Department of  
Environmental Quality  
*M. Waite* 2/6/2020  
Reviewer Date



**TRACT 8A**  
10.31 ACRES

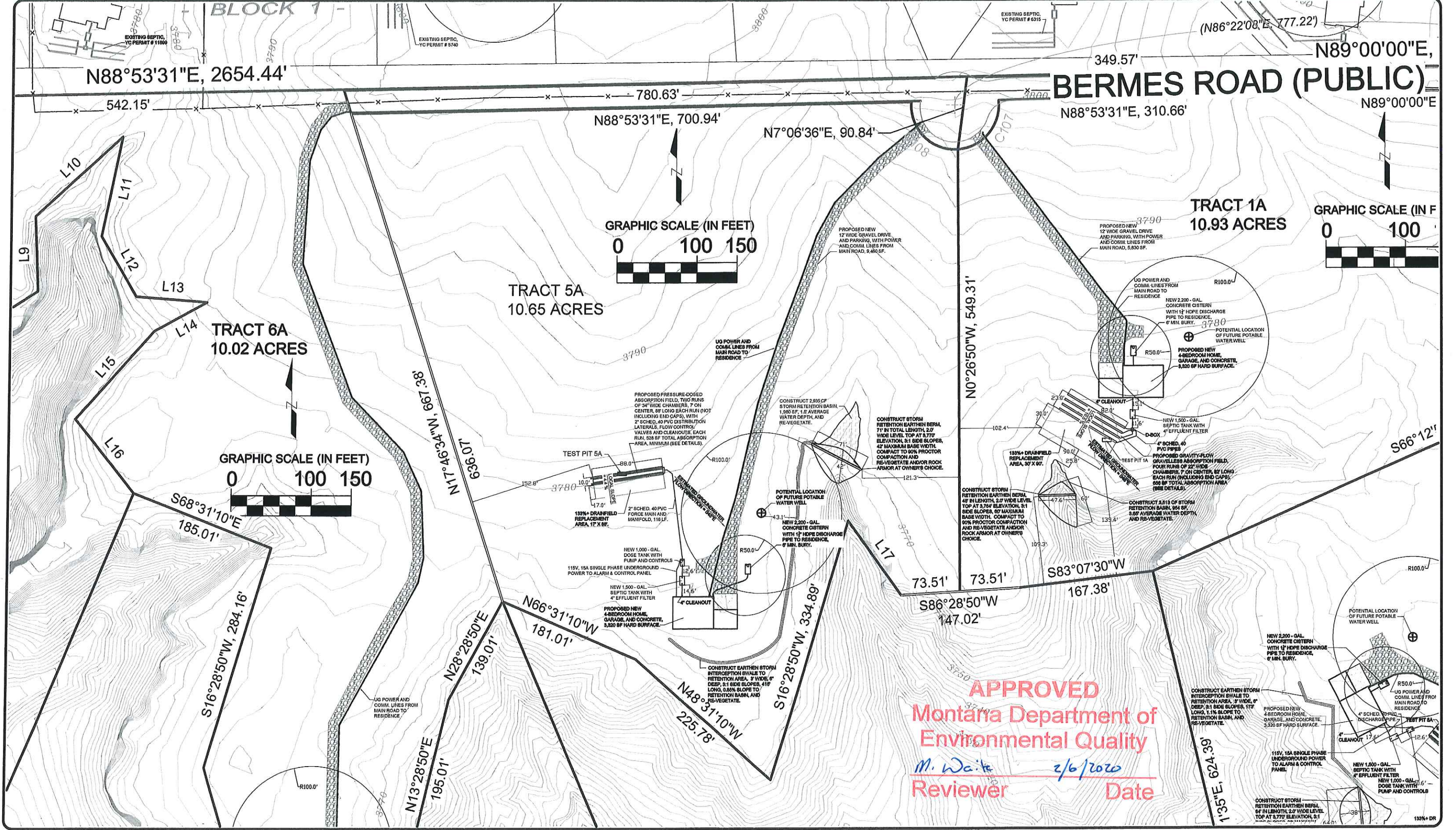
DESIGN	DAS				
DRAWN	DAS				
CHECKED	DAS				
APPROVED	DAS				
NO.	DATE	REVISION	BY	APP.	

## LOT PLAN - TRACT 1A



**TREASURE STATE ENGINEERING**  
6308 GOLDEN WEST TERRACE, BILLINGS, MT 59106  
PH. (406) 655-9397, EMAIL: dstrand25@msn.com  
A Professional Limited Liability Corporation

FAR AND AWAY ESTATES SUBDIVISION, PHASE 1,  
RESIDENTIAL SITE EVALUATION AND DESIGN  
PACKAGE, COS NO. 781 3RD AMENDED, IN  
S15, T01N, R24E. TRACTS 1A, 5A, 6A, 7A, 8A, 9A-2,  
10A-2, AND 21A ONLY.  
YELLOWSTONE COUNTY, MONTANA



**APPROVED**  
**Montana Department of**  
**Environmental Quality**  
*M. Waite*      *2/6/2020*  
**Reviewer**                      **Date**

DESIGN_DAS			
DRAWN_DAS			
CHECKED_DAS			
APPROVED_DAS			
NO	DATE	REVISION	BY APP

## LOT PLAN - TRACT 5A

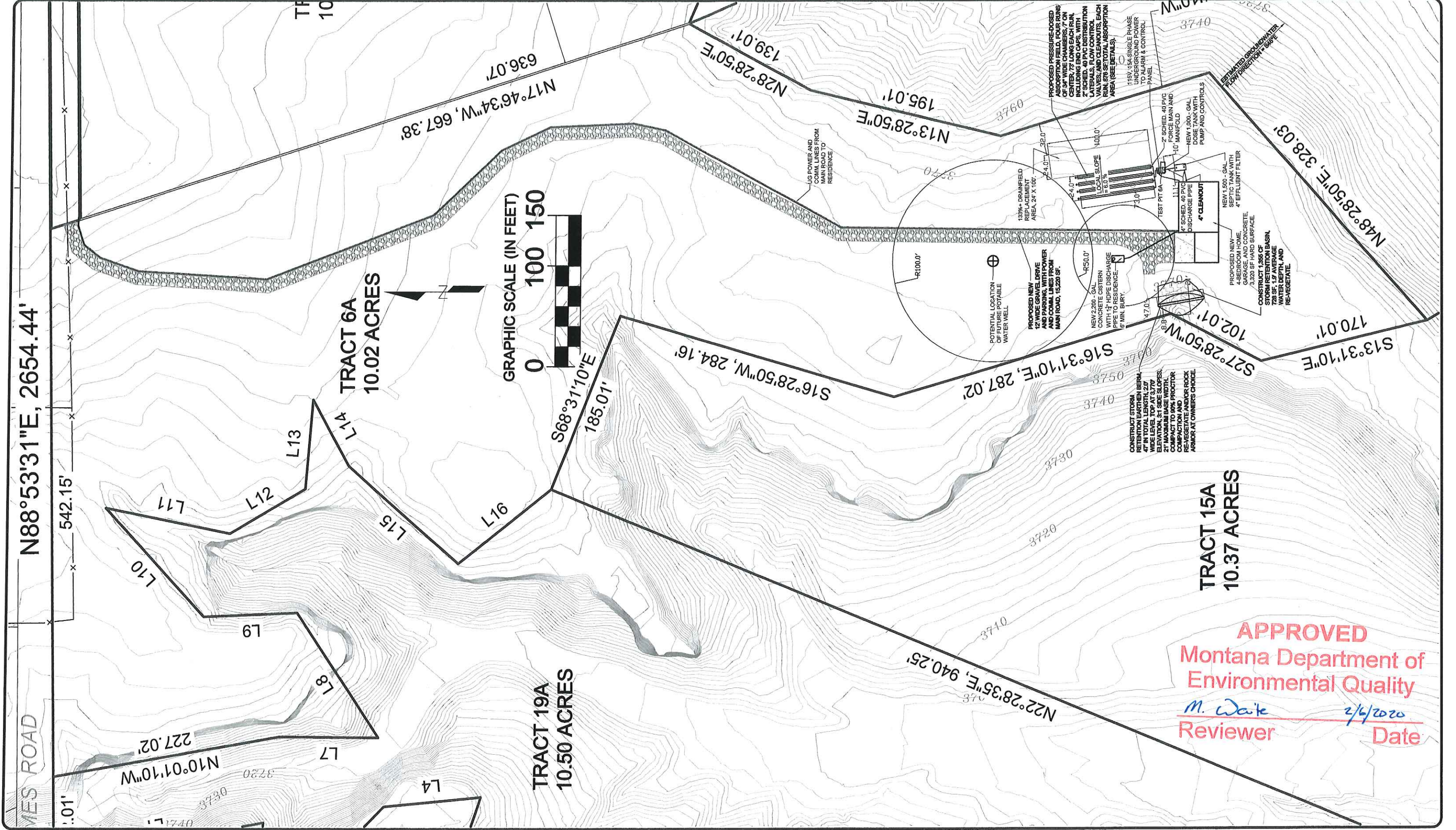


**TREASURE STATE  
ENGINEERING**

6308 GOLDEN WEST TERRACE, BILLINGS, MT 59106  
 PH. (406) 655-9397, EMAIL: dstrand25@msn.com  
 A Professional Limited Liability Corporation

FAR AND AWAY ESTATES SUBDIVISION, PHASE 1,  
 RESIDENTIAL SITE EVALUATION AND DESIGN  
 PACKAGE, COS NO. 781 3RD AMENDED, IN  
 S15, T01N, R24E. TRACTS 1A, 5A, 6A, 7A, 8A, 9A-2,  
 10A-2, AND 21A ONLY.  
 YELLOWSTONE COUNTY, MONTANA

DATE 2/3/20	TSE NO 1922S
4	
SHEET	
4 OF 15	



**APPROVED**  
**Montana Department of**  
**Environmental Quality**  
*M. Wake*  
**Reviewer** *2/4/2020*  
**Date**

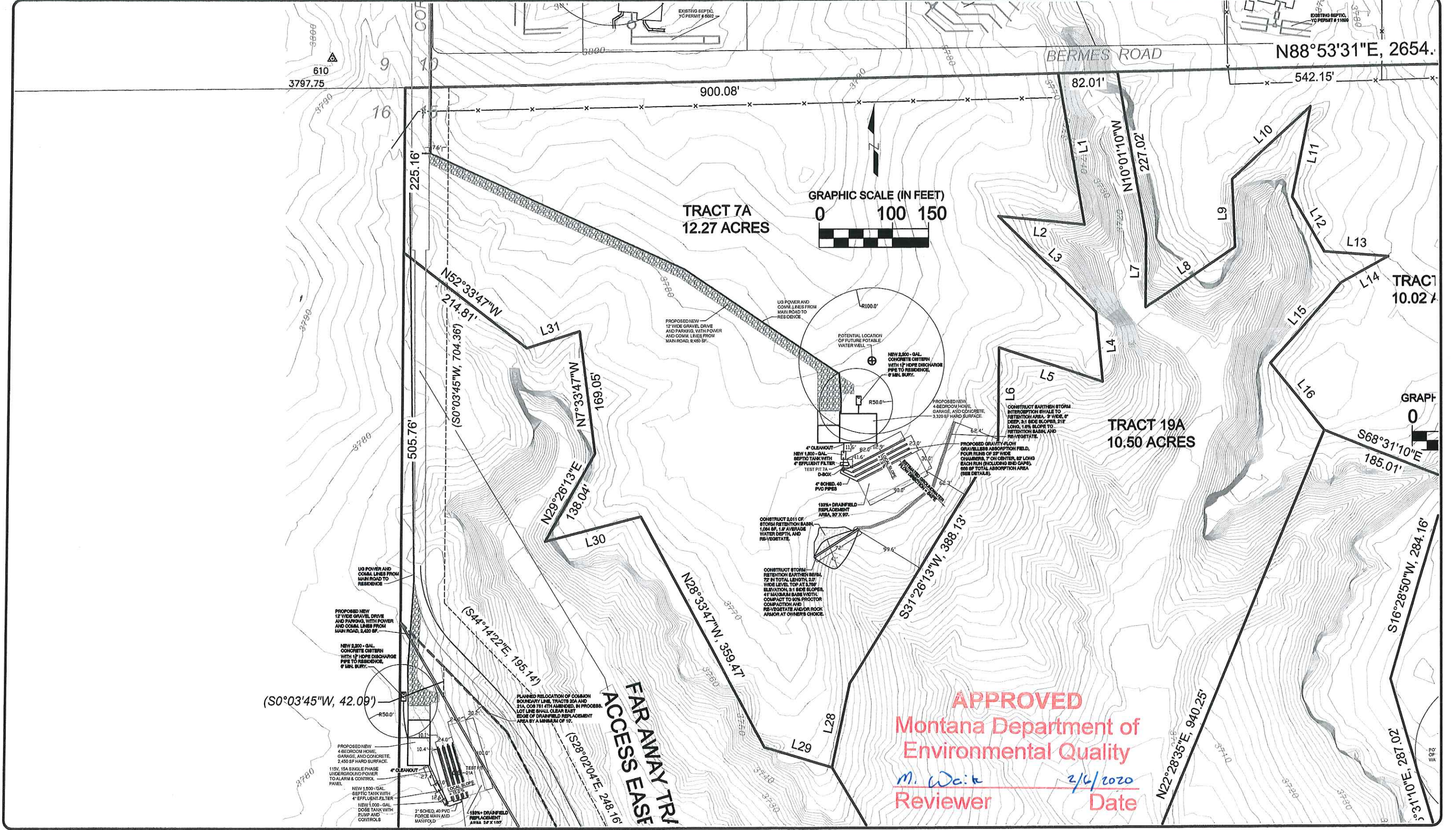
DESIGN_DAS					
DRAWN_DAS					
CHECKED_DAS					
APPROVED_DAS					
NO	DATE	REVISION	BY	APP	

**LOT PLAN -**  
**TRACT 6A**



**TREASURE STATE ENGINEERING**  
 6308 GOLDEN WEST TERRACE, BILLINGS, MT 59106  
 PH. (406) 655-9397, EMAIL: dstrand25@msn.com  
 A Professional Limited Liability Corporation

FAR AND AWAY ESTATES SUBDIVISION, PHASE 1,  
 RESIDENTIAL SITE EVALUATION AND DESIGN  
 PACKAGE, COS NO. 781 3RD AMENDED, IN  
 S15, T01N, R24E. TRACTS 1A, 5A, 6A, 7A, 8A, 9A-2,  
 10A-2, AND 21A ONLY.  
 YELLOWSTONE COUNTY, MONTANA



**APPROVED**  
 Montana Department of  
 Environmental Quality  
*M. Waik*  
 Reviewer 2/6/2020  
Date

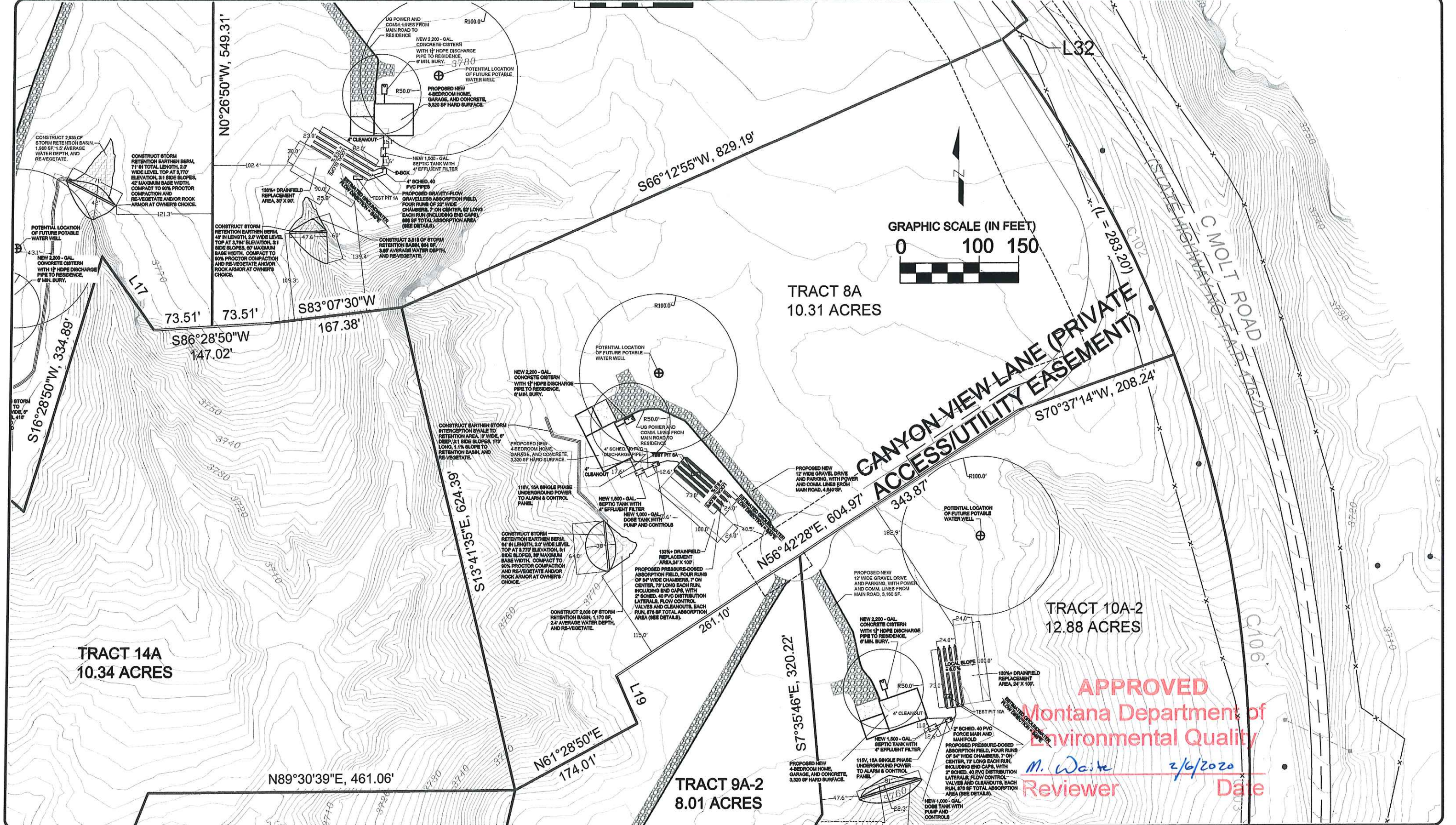
DESIGN_DAS					
DRAWN_DAS					
CHECKED_DAS					
APPROVED_DAS					
NO	DATE	REVISION	BY	APP.	

## LOT PLAN - TRACT 7A



**TREASURE STATE  
ENGINEERING**  
 6308 GOLDEN WEST TERRACE, BILLINGS, MT 59106  
 PH. (406) 655-9397, EMAIL: dstrand25@msn.com  
 A Professional Limited Liability Corporation

FAR AND AWAY ESTATES SUBDIVISION, PHASE 1,  
 RESIDENTIAL SITE EVALUATION AND DESIGN  
 PACKAGE, COS NO. 781 3RD AMENDED, IN  
 S15, T01N, R24E. TRACTS 1A, 5A, 6A, 7A, 8A, 9A-2,  
 10A-2, AND 21A ONLY.  
 YELLOWSTONE COUNTY, MONTANA



**APPROVED**  
 Montana Department of  
 Environmental Quality  
*M. White* 2/6/2020  
 Reviewer Date

DESIGN DAS			
DRAWN DAS			
CHECKED DAS			
APPROVED DAS			
NO	DATE	REVISION	BY APP

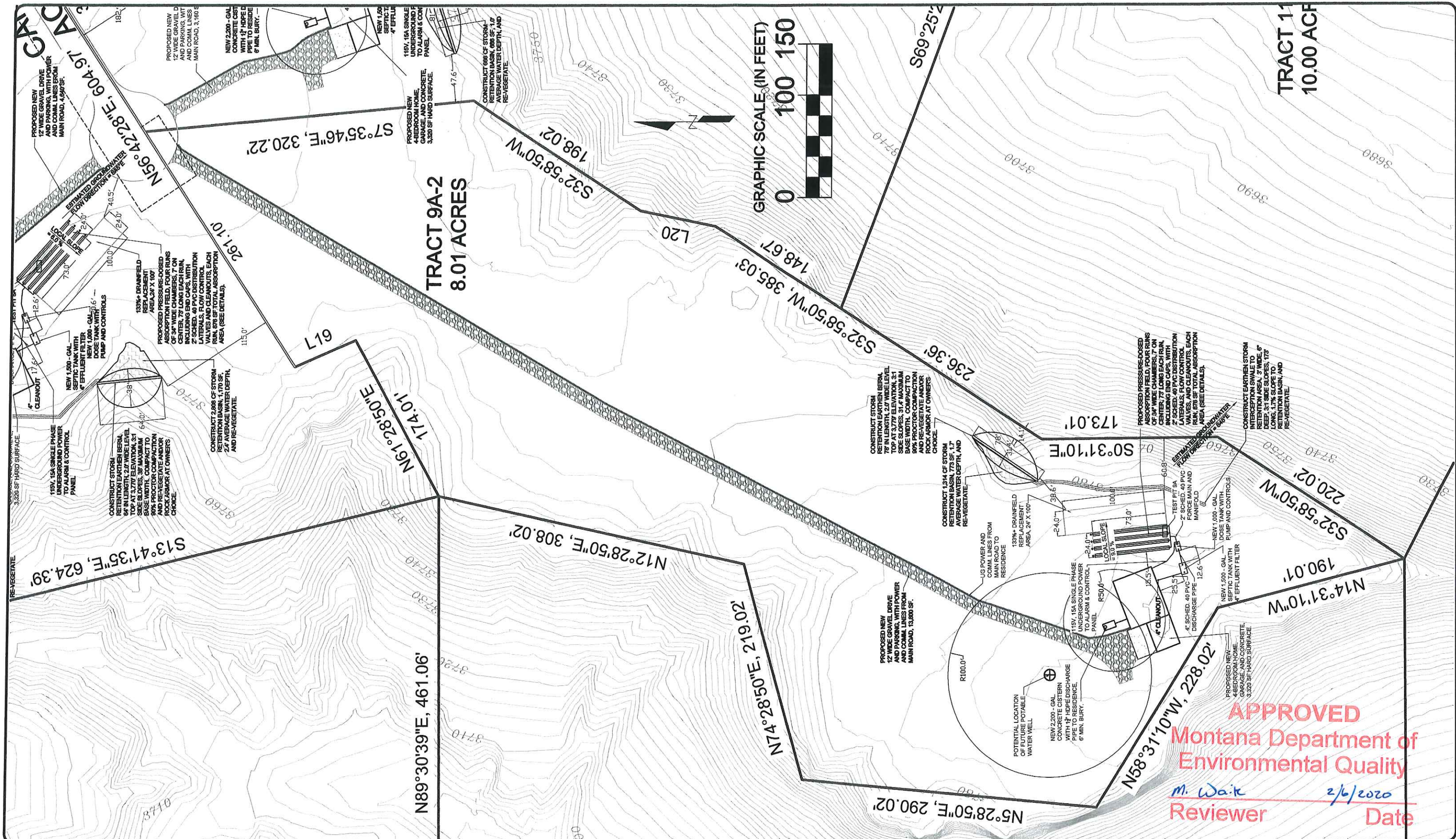
## LOT PLAN - TRACT 8A

### TREASURE STATE ENGINEERING

6308 GOLDEN WEST TERRACE, BILLINGS, MT 59106  
 PH. (406) 655-9397, EMAIL: dstrand25@msn.com  
 A Professional Limited Liability Corporation

FAR AND AWAY ESTATES SUBDIVISION, PHASE 1, RESIDENTIAL SITE EVALUATION AND DESIGN PACKAGE, COS NO. 781 3RD AMENDED, IN S15, T01N, R24E. TRACTS 1A, 5A, 6A, 7A, 8A, 9A-2, 10A-2, AND 21A ONLY. YELLOWSTONE COUNTY, MONTANA

DATE 2/3/20
TSE NO 19225
<b>7</b>
SHEET 7 OF 15



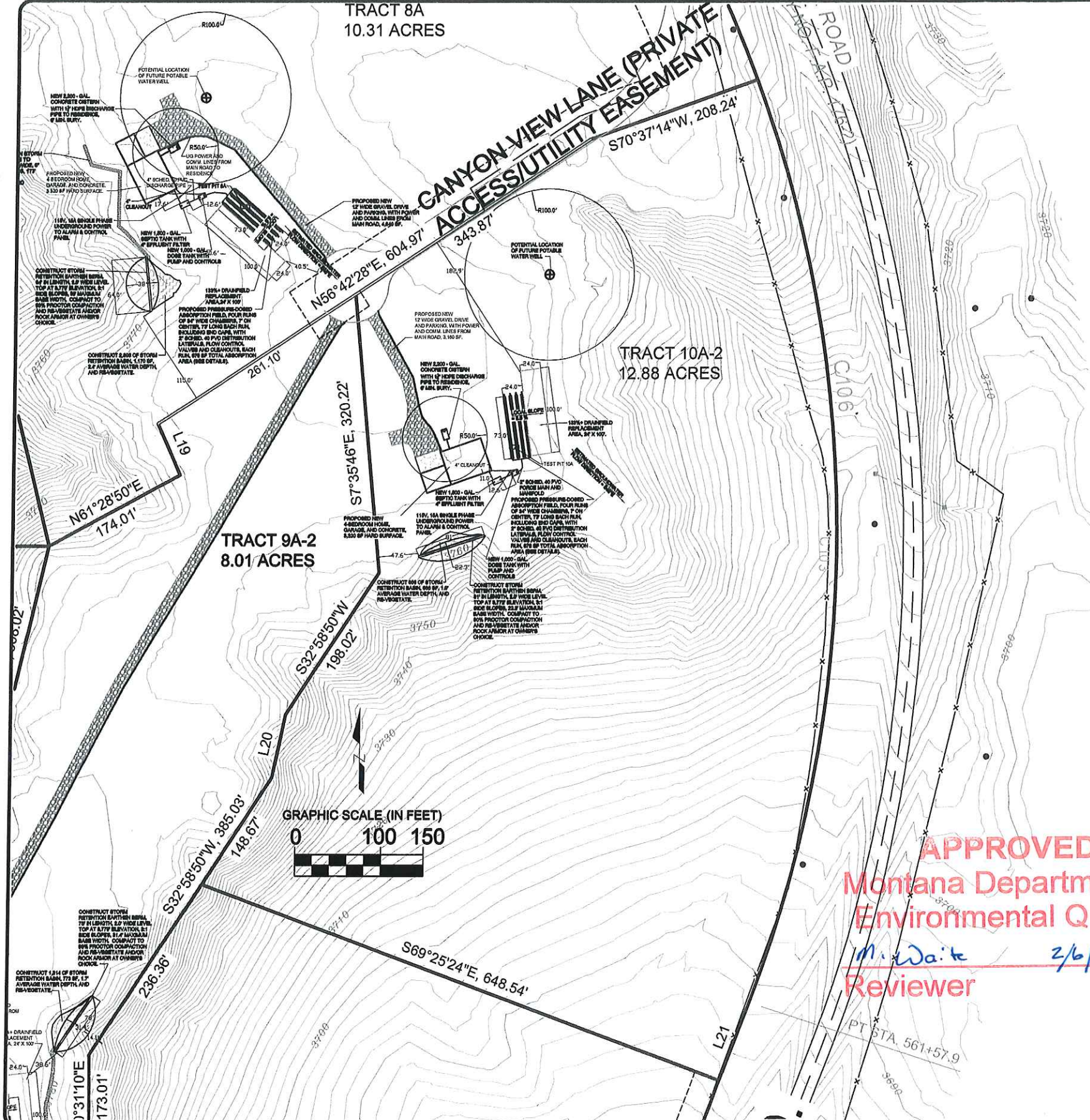
DESIGN DAS					
DRAWN DAS					
CHECKED DAS					
APPROVED DAS					
NO	DATE	REVISION	BY	APP	

**LOT PLAN -  
TRACT 9A-2**



**TREASURE STATE  
ENGINEERING**  
 6308 GOLDEN WEST TERRACE, BILLINGS, MT 59106  
 PH. (406) 655-9397, EMAIL: dstrand25@msn.com  
 A Professional Limited Liability Corporation

FAR AND AWAY ESTATES SUBDIVISION, PHASE 1,  
 RESIDENTIAL SITE EVALUATION AND DESIGN  
 PACKAGE, COS NO. 781 3RD AMENDED, IN  
 S15, T01N, R24E. TRACTS 1A, 5A, 6A, 7A, 8A, 9A-2,  
 10A-2, AND 21A ONLY.  
 YELLOWSTONE COUNTY, MONTANA



LINE TABLE		
LINE NO.	LENGTH	BEARING
L1	210.07'	S10°03'47"E
L2	119.04'	N84°03'47"W
L3	188.06'	S45°33'47"E
L4	96.03'	S05°33'47"E
L5	150.05'	N71°33'47"W
L6	127.04'	S00°26'13"W
L7	98.01'	N00°28'50"E
L8	148.01'	N56°28'50"E
L9	93.01'	N02°31'10"W
L10	146.01'	N47°28'50"E
L11	126.01'	S11°28'50"W
L12	87.01'	S30°31'10"E
L13	89.01'	S85°31'10"E
L14	75.01'	S61°28'50"W
L15	146.01'	S41°28'50"W
L16	118.01'	S38°31'10"E

LINE TABLE		
LINE NO.	LENGTH	BEARING
L17	114.01'	N35°31'10"W
L19	65.56'	N23°31'10"W
L20	75.01'	S11°28'50"W
L21	96.99'	N20°48'13"E
L22	20.00'	S69°11'47"E
L23	35.60'	S23°06'53"E
L24	75.85'	S11°26'28"W
L25	60.00'	N59°27'38"E
L26	44.92'	N59°26'35"E
L27	62.34'	N60°19'31"E
L28	117.04'	S11°26'13"W
L29	97.03'	N73°33'47"W
L30	135.04'	S75°26'13"W
L31	76.02'	S72°26'13"W
L32	39.76'	S52°55'15"W

CURVE TABLE					
CURVE NO.	RADIUS	LENGTH	DELTA	CHORD BEARING	CHORD LENGTH
C101	1577.10'	377.91'	13°43'46"	S44°09'58"E	377.01'
C102	1537.10'	454.25'	16°55'56"	N28°46'49"W	452.60'
C103	1537.10'	1100.21'	41°00'38"	N00°11'27"E	1076.88'
C104	200.00'	78.71'	22°33'00"	S10°13'49"W	78.21'
C105	229.96'	118.60'	29°33'00"	N74°07'45"E	117.29'
C106	1537.10'	1554.45'	57°56'34"	S08°16'31"E	1489.06'
C107	55.00'	88.48'	92°10'38"	N39°46'40"E	79.25'
C108	55.00'	94.34'	98°16'39"	S45°02'29"E	83.20'
C109	1577.10'	254.47'	9°14'41"	N46°24'30"W	254.20'

DESIGN DAS					
DRAWN DAS					
CHECKED DAS					
APPROVED DAS					
NO	DATE	REVISION	BY	APP.	

**LOT PLAN -  
TRACT 10A-2**

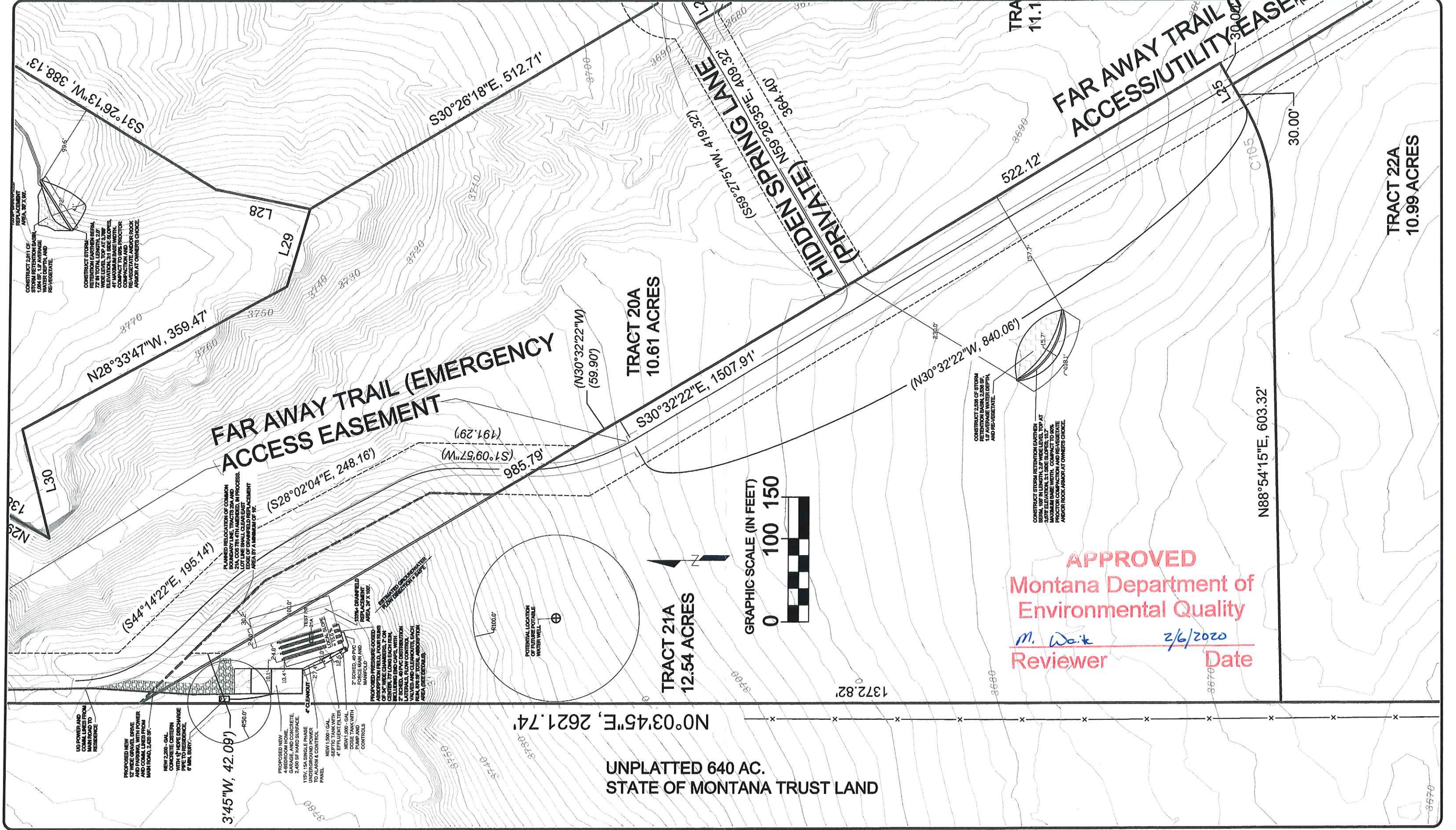


**TREASURE STATE  
ENGINEERING**

6308 GOLDEN WEST TERRACE, BILLINGS, MT 59106  
PH. (406) 655-9397, EMAIL: dstrand25@msn.com  
A Professional Limited Liability Corporation

FAR AND AWAY ESTATES SUBDIVISION, PHASE 1,  
RESIDENTIAL SITE EVALUATION AND DESIGN  
PACKAGE, COS NO. 781 3RD AMENDED, IN  
S15, T01N, R24E. TRACTS 1A, 5A, 6A, 7A, 8A, 9A-2,  
10A-2, AND 21A ONLY.  
YELLOWSTONE COUNTY, MONTANA





DESIGN	DAS				
DRAWN	DAS				
CHECKED	DAS				
APPROVED	DAS				
NO	DATE	REVISION	BY	APP	

# LOT PLAN - TRACT 21A



**TREASURE STATE ENGINEERING**  
 6308 GOLDEN WEST TERRACE, BILLINGS, MT 59106  
 PH. (406) 655-9397, EMAIL: dstrand25@msn.com  
 A Professional Limited Liability Corporation

FAR AND AWAY ESTATES SUBDIVISION, PHASE 1,  
 RESIDENTIAL SITE EVALUATION AND DESIGN  
 PACKAGE, COS NO. 781 3RD AMENDED, IN  
 S15, T01N, R24E. TRACTS 1A, 5A, 6A, 7A, 8A, 9A-2,  
 10A-2, AND 21A ONLY.  
 YELLOWSTONE COUNTY, MONTANA